

TREASURE COAST COMMERCE CENTER TWO AND THREE

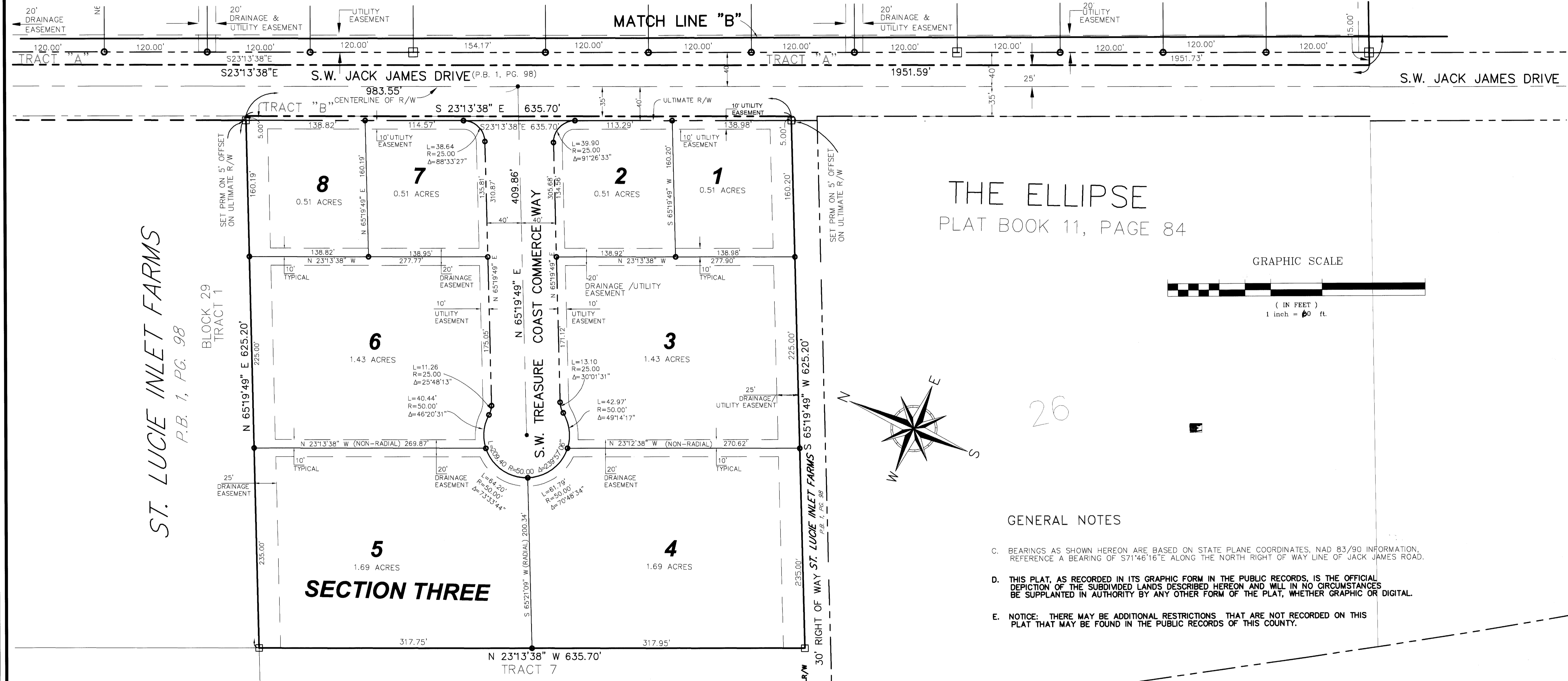
BEING A REPLAT OF TRACTS 3 AND 6, BLOCK 32, LYING WEST OF INTERSTATE 95; AND ALL OF TRACTS 4 AND 5, BLOCK 32 AND TRACTS 3 AND 4 BLOCK 31, LYING WEST OF INTERSTATE 95, AND TRACT 8, BLOCK 29, OF ST. LUCIE INLET FARMS, ACCORDING TO THE PLAT THEREOF RECORDED IN PLAT BOOK 1, PAGE 98, PALM BEACH (NOW MARTIN) COUNTY, FLORIDA.

HANSON GRANT
MARTIN COUNTY, FLORIDA.

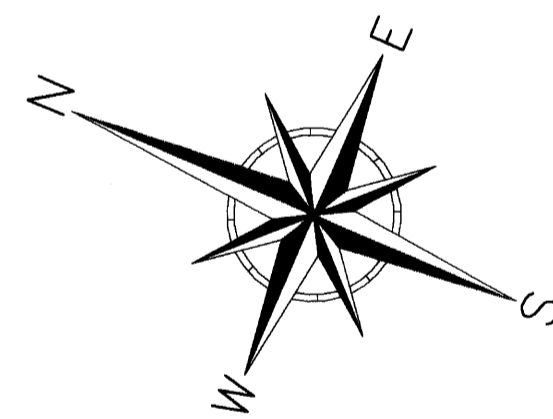
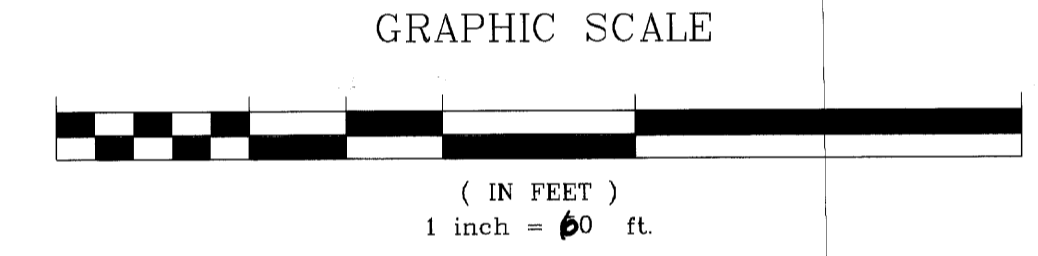
HANSON GRANT
MARTIN COUNTY, FLORIDA.

LEGEND

R/W	RIGHT-OF-WAY	R	INDICATES RADIUS
○	INDICATES NO. 5 IRON ROD AND CAP "BL LB 6852"	L	INDICATES LENGTH OF ARC
●	INDICATES SET PK NAIL AND WASHER "BL LB 6852" (PCP)	D	INDICATES DELTA ANGLE
⊠	INDICATES SET PERMANENT REFERENCE MONUMENT, 4X4 CONCRETE MON. WITH ALUMINUM DISK STAMPED "BETSY LINDSAY, INC. LB 6852 PRM"	N	INDICATES NORTH
⊞	INDICATES FOUND PERMANENT REFERENCE MONUMENT (PRM)	E	INDICATES EAST
NAD83/90	INDICATES STATE PLANE COORDINATES, FLORIDA EAST ZONE, NORTH AMERICAN DATUM OF 83/90	S	INDICATES SOUTH
NAD	INDICATES NORTH AMERICAN DATUM	W	INDICATES WEST
TAN	INDICATES TANGENT LENGTH	LB	INDICATES LICENSED BUSINESS
R/W	INDICATES RIGHT OF WAY		
⊕	INDICATES CENTER LINE		
O.R.B.	INDICATES OFFICIAL RECORDS BOOK		
P.B.	INDICATES PLAT BOOK		
PG.	INDICATES PAGE		



THE ELLIPSE
PLAT BOOK 11, PAGE 84



GENERAL NOTES

- C. BEARINGS AS SHOWN HEREON ARE BASED ON STATE PLANE COORDINATES, NAD 83/90 INFORMATION, REFERENCE A BEARING OF S71°46'16" E ALONG THE NORTH RIGHT OF WAY LINE OF JACK JAMES ROAD.
- D. THIS PLAT, AS RECORDED IN ITS GRAPHIC FORM IN THE PUBLIC RECORDS, IS THE OFFICIAL DEPICTION OF THE SUBDIVIDED LANDS DESCRIBED HEREON AND WILL IN NO CIRCUMSTANCES BE SUPPLANTED IN AUTHORITY BY ANY OTHER FORM OF THE PLAT, WHETHER GRAPHIC OR DIGITAL.
- E. NOTICE: THERE MAY BE ADDITIONAL RESTRICTIONS THAT ARE NOT RECORDED ON THIS PLAT THAT MAY BE FOUND IN THE PUBLIC RECORDS OF THIS COUNTY.

ST. LUCIE INLET FARMS
P.B. 1, PG. 98

BLOCK 29
TRACT 1

SECTION THREE

FLORIDA'S TURNPIKE

B BETSY LINDSAY, INC.
SURVEYING AND MAPPING
208 NORTH U.S. HWY NO. 1 - UNIT 8 - TEQUESTA, FLORIDA 33469
(561)575-5275 (561)575-4324 FAX
TREASURE COAST COMMERCE
TWO AND THREE SHEET 4 OF 4